



Attic staircases and flat-roof hatches



highly-insulated



safe



durable

safe step up



Maximum comfort, optimal use of space and the highest safety standards.



Robert Wipplinger

The wishes of our customers as well as constantly growing technical requirements are our motivation and our mission for the production of high-quality attic staircases – for more than 60 years.

In order to be able to rely on the high-quality standards of our products even in such important quality criteria as fire retardancy or thermal insulation, our attic staircases are continuously tested and certified by independent institutes.

Ihr
Wipplinger Robert



TU Graz
Prüfbericht Nr.
B16.023.001.111



Klimatec 160
Passivhaus Institut
Dr. Wolfgang Feist
64283 Darmstadt
Germany



Klasse 4
Prüf Nr.: 12-001746-PR03



ÖNORM EN 1363
ÖNORM EN 1634
ÖNORM B3860



ÖA Nummer:
R-14.1.3-15-14885
E-14.1.3-14-7614
R-14.1.3-17-14887
E-14.1.3-10-7613
R-14.1.3-17-14886
E-14.1.3-10-7612

wipro attic staircases are...

- tested and monitored by independent test institutes according to ÖNORM EN 1363, ÖNORM EN 1634 and ÖNORM B3860.
- marked with the ÜA seal by independent testing institutes.
- registered and recognized in the Austrian list of building materials.

Klassifikation:
E1,60
E1,90-C
E1,30
E1,30
E1,30
E1,30
E1,30

Type:
GM4 Isotec 200
GM4 Isotec
GM4 Isotec
GM4 Isotec Luxe
Klimatec 160
GM4 Eurostep



wippro attic staircases



The renowned Austrian quality

- » technically sophisticated
- » purposefully built
- » easy and convenient to use
- » durable, robust and stable
- » solid accessories
- » airtight closure
- » many individual designs
- » telescopic spring support in the handrail
- » safe and functional
- » mnoho verzí
- » fire-retardant and heat-insulating
- » as good as maintenance-free BLOWER DOOR
- » ball-bearing closing mechanism
- » pre-assembled
- » user-friendly and easy-to-install



successful blower-door test while using a Wippro air seal set and correct assembly (on certain models)



EI₂30 to EI₂120 – fire retardant from 30 to 120 minutes according to test report and production monitoring; ÜA certified and registered in the Austrian building material list (depending on type)



Energy subsidies in many states thanks to the classification as an energy-saving measure through double-layer systems and high thermal insulation values



Electric drive (can not be retrofitted!)



QR-Codes bring you directly to the respective product information on our homepage.

**Fire-retardant
 up to 120 minutes**



Depending on the model, Wipro attic ladders are fire-retardant for 30, 60, 90 or 120 minutes.

**Best
 insulation values**



KLIMATEC 160 | U_p -Wert = 0,34 W/m²K
 total component tested by Passivhaus Institut Darmstadt according to Certificate No. 0836as01

wipro attic staircases

Perfection down to the smallest detail.

INSTALLATION + SPECIAL SIZES

- » **Wipro attic staircases** are delivered completely assembled and ready for installation
- » **Installation instructions** with mounting material for concrete or wooden ceilings included
- » **Standard sizes available**
- » **Custom-made versions possible**
- » **Height of hatch can be made-to-order**
- » **Ball-bearing closing mechanism / inner spring-supported swivel mechanism**

HEAT INSULATION

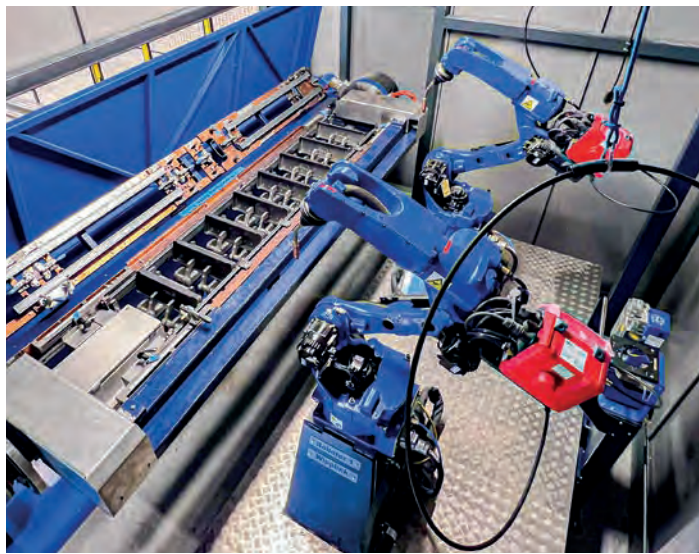
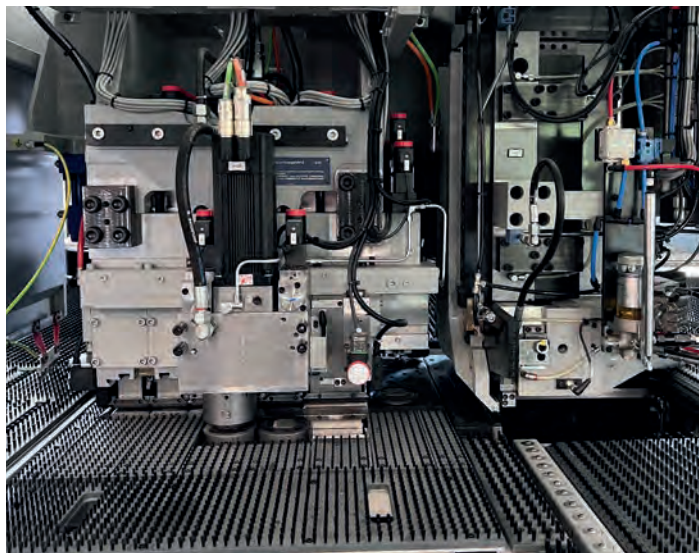
Depending on the selected stair type or individual configuration of the attic staircase

- » **Special top cover** for perfect thermal insulation (optional)
- » **Circumferential seals** made of plastic hollow chamber profiles and fire protection laminate, which foams up in the event of a fire
- » **Optimal thermal insulation** values due to 6, 10, 16 or 20 cm (≈2.4, 3.9, 6.3 or 7.9 inches) thick insulation in the bottom cover depending on the stair model
- » **Best thermal insulation values** through thermal separation in the hatch box and in the double seam door
- » **Air-tightness class 4** thanks to ingenious design and perfect processing

ZABEZPEČENÍ + ZAJIŠTĚNÍ KVALITY

- » **EI₂30, EI₂60, EI₂90 or EI₂120** fire-retardant from 30 to 120 minutes (depending on the stair model)
- » **Anti-slip knobs** on the treads
- » **High-quality plastic powder-coated surface**
- » High step load as per ÖNORM test **up to max. 250 kg (total)**
- » Large treads – 36 cm (≈14.2 inches) wide x 12 cm (≈4.7 inches) deep
- » **Extra long handrail with telescopic support for easy stair operation**
- » **External monitoring and internal quality assurance** during the production of certified attic staircases (ÜA certified)
- » **Thermal separation**
- » **4 cm (≈1.6 inches) frame** for covering the wall hole fix integrated
- » **Stairs mainly maintenance-free**

...made by our experts.



TESTED PROTECTION AGAINST HEAT LOSS

Isotec 200

The Isotec 200 removes any potential energy or heat loss between the living area and the attic thanks to it being entirely sealed all-round.

60 minutes fire-retardant

EI2 60 tested according to ÖNORM 3860, EN 1634-1, EN1363-1

Heat transfer coefficient in the bottom cover: $U = 0,17 \text{ W/m}^2\text{K}$
(calculated) by TU Graz No. B12.137.002.484

Heat transfer coefficient with thermally insulated top cover: $U = 0,13 \text{ W/m}^2\text{K}$

(calculated) by TU Graz No.

Air tightness class 4

tested according to DIN EN 12114 by IFT Rosenheim according to test report No. 12-001746-PR04

- » 52 cm thermally separated hatch panel, also higher possible
- » 20 cm multi-layered stone wool insulation in the bottom cover
- » 3 high-quality sealing layers
- » telescopic handrail
- » ball-bearing, spring-supported, wear-free closing mechanism
- » studded treads with a size of 36 cm (≈ 14.2 inches) width x 12 cm (≈ 4.7 inches)
- » high-quality powder-coated surface
- » Infinitely variable adjustment to the room height
- » recessed rotary hinges

Extras

- » blower door set for airtight seal
- » galvanized version possible
- » top cover (with or without insulation)
- » custom-made hatch panels
- » three-sided protective railing
- » switches (e.g. for light)
- » electrical drive, available with remote control



The Isotec 200 seals roof spaces for decades in an energy-saving and fire-resistant manner.



6cm thermal insulation in top cover (optional)

STEP LOAD up to 250kg

Promoting energy-saving measures!

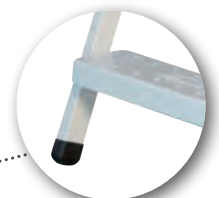
52 cm



spring-supported telescopic rail and ball-bearing, wear-free closing mechanism



20 cm thermal insulation in bottom cover



studded treads for higher safety and rounded protective caps

wipro air-tight set



recommended for optimal installation and best sealing (further information see page 19.)



Isotec 200

THE WIPPRO ALLROUNDER



Isotec and Isotec Luxe

All standard sizes 30 minutes fire-retardant

EI2 30 according to ÖNORM 3860, EN 1634-1, EN1363-1 model Isotec fire-resistant up to 120 minutes against surcharge.

Heat transfer coefficient in the lower cover: $U = 0,33 \text{ W/m}^2\text{K}$

(calculated) by TU Graz No. B12.137.001.484

Heat transfer coefficient with heat insulated top cover:

$U = 0,21 \text{ W/m}^2\text{K}$

calculated by TU Graz Nr. B12.137.001.484

Air tightness class 4

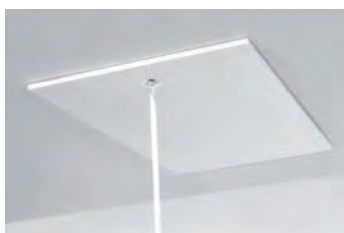
tested according to DIN EN 12114 by the IFT Rosenheim according to test report No. 12-001746-PR03

- » 42 cm (~16.5 in) thermally separated hatch panel, also higher possible
- » 10 cm multi-layered stone wool insulation in the bottom cover
- » 2 high-quality sealing layers
- » spring-supported telescopic handrail
- » ball-bearing, spring-supported, wear-free closing mechanism
- » studded treads with a size of 36 cm (~14.2 inches) width x 12 cm (~4.7 inches)
- » high-quality powder-coated surface
- » Infinitely variable adjustment to the room height
- » recessed rotary hinges
- » seamless view from the bottom with Isotec Luxe

Extras

- » blower door set for airtight seal
- » galvanized steel version possible
- » top cover (with or without insulation)
- » custom-made hatch panels
- » three-sided protective railing
- » switches (e.g. for light)
- » electrical drive, available with remote control
- » Isotec fire-retardant 60, 90 & 120 min incl. special top cover

Isotec Luxe seamless view for a flawless appearance



modern view
thanks to the innovative bottom cover



optimal installation in plasterboard covers
beautiful either concrete, brick or plaster boards



comparison to a Isotec model
staircase bottom view with the joint



Prof Nr: 12-001746-PR03



Isotec
simply fire retardant
30,60,90 and 120 min
fire-retardancy



Isotec

Isotec Luxe

Isotec SMART

30 minute fire-retardant

EI₃₀ proved by ÖNORM 3860, EN 1634-1, EN1363-1

Heat transfer coefficient in the lower cover: $U = 0,33 \text{ W/m}^2\text{K}$

(calculated) by TU Graz Nr. B12.137.001.484

Air tightness class 4

tested according to DIN EN 12114 by the IFT Rosenheim according to test Report No. 12-001746-PR03

- » 29 cm (~11,4 in) thermally separated hatch panel, also higher possible
- » 10 cm multi-layered stone woll insulation in the bottom cover
- » 2 high-quality sealing layers
- » spring-supported telescopic handrail
- » internal, spring-supported, pivot mechanism
- » studded treads with a size of 36 cm (≈14.2 inches) width x 12 cm (≈4.7 inches) depth
- » high-quality powder-coated surface
- » Infinitely variable adjustment to the room height
- » recessed rotary hinges

Extras

- » blower door set for airtight seal
- » galvanized steel version possible
- » custom-made hatch panels
- » three-sided protective railing
- » switches (e.g. for light)

**STEP LOAD
up to 250kg**

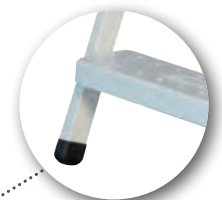
29 cm



additional step in the top cover



10cm thermal insulation in bottom cover



studded treads for extra safety and rounded protective caps

wippro airtight set



recommended for optimal installation and best sealing
(further information see page 19)

Hatch covering made of high-quality OSB material and welded full web frame, thermally insulated.



Isotec smart

IDEAL SOLUTION FOR THE BEST INSULATION VALUES

Klimatec 160

Like all Wipro products, the high-quality Klimatec 160 attic staircase is designed for long-term use. It stands out with its comfort-enhancing features and adherence to the highest standards of comfort and hygiene.

30 minute fire-retardant

EL₂30 tested according to ÖNORM 3860, EN 1634-1, EN1363-1

U_D-value = 0,34 W/m²K total component

tested by Passivhaus Institut Darmstadt according to Certificate No. 0836as01

Air tightness class 4

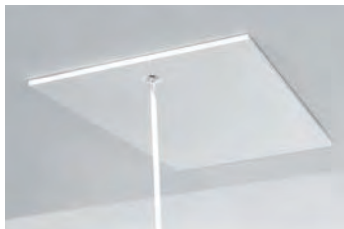
tested according to EN12114 and EN 1026 by TU Graz according to test report No. B16.023.001.111

- » 48 cm (~18.9 in) thermally separated hatch panel, also higher possible
- » 16 cm multi-layered thermal insulation in the bottom cover
- » 3 high-quality sealing layers
- » spring-supported telescopic handrail
- » ball-bearing, spring-supported, wear-free closing mechanism
- » studded treads with a size of 36 cm (≈14.2 inches) width x 12 cm (≈4.7 inches) depth
- » high-quality powder-coated surface
- » Infinitely variable adjustment to the room height
- » recessed rotary hinges
- » seamless view from the bottom
- » certified Passive House component

Extras

- » blower door set for airtight seal
- » galvanized steel version possible
- » top cover with thermal insulation
- » custom-made hatch panels
- » three-sided protective railing
- » switches (e.g. for light)

Klimatec 160 / Klimatec 160 smart seamless bottom view for a perfect appearance



modern view
thanks for the innovative bottom cover



model for comparison
bottom cover view with joint



TU Graz
Prüfbericht Nr.
B16.023.001.111



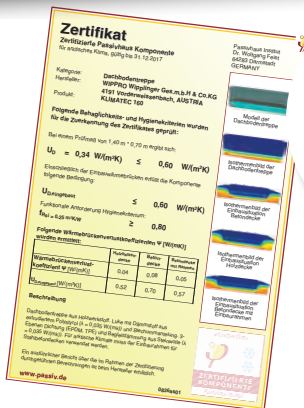
U_D-Wert = 0,34 W/m²K

gesamtes Bauteil geprüft durch das
Passivhaus
Institut Darmstadt lt. Zertifikat Nr.
0836as01



Klimatec 160

Klimatec 160 SMART



**CERTIFIED
Passive House
component**

30 minute fire-retardant

EI₂₃₀ tested according to ÖNORM 3860, EN 1634-1, EN 1363-1

U_D-value = 0,34 W/m²K total component

tested by Passivhaus Institut Darmstadt according to Certificate No. 0836as01

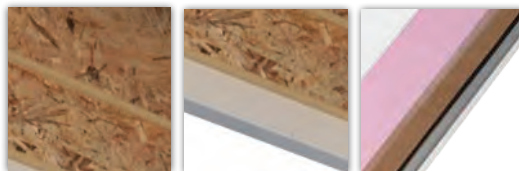
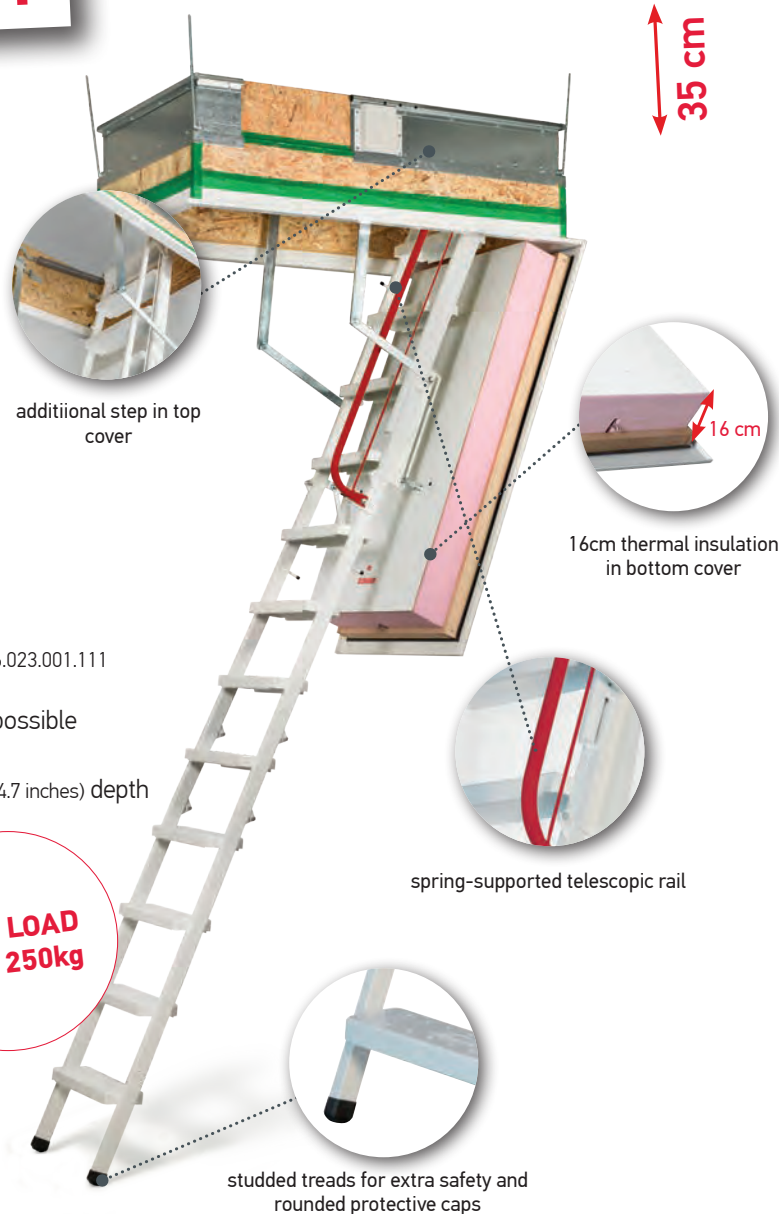
Air tightness class 4

tested according to EN12114 a EN 1026 by TU Graz according to Certificate No. B16.023.001.111

- » 35 cm (~13.77 in) thermally separated hatch panel, also higher possible
- » 16 cm multi-layered thermal insulation in the bottom cover
- » studded treads with a size of 36 cm (=14.2 inches) width x 12 cm (=4.7 inches) depth
- » 3 high-quality sealing layers
- » spring-supported telescopic handrail
- » internal spring-supported pivot mechanism
- » high-quality powder-coated surface
- » Infinitely variable adjustment to the room height
- » recessed rotary hinges
- » seamless view from the bottom
- » certified Passive House component

Extras

- » blower door set for airtight seal
- » galvanized steel version possible
- » custom-made hatch panels
- » three-sided protective railing
- » switches (e.g. for light)



3 high-quality insulation layers

wipro air-tight set



recommended for optimal installation and best sealing
(further information see page 19.)



TU Graz
Prüfbericht Nr.
B16.023.001.111



Klimatec 160 smart

EASY TO USE

Eurostep

powder-coated or galvanized

30 minute fire-retardant

El₂30 tested according to ÖNORM 3860, EN 1634-1, EN1363-1

Heat transfer coefficient in the lower cover: $U = 0,7 \text{ W/m}^2\text{K}$
(calculated)

- » 39 cm (~15.4 in) high welded fully mitred frame to cover the hatch
- » 6 cm (~2.4 in) multi-layered stone wool insulation in the bottom cover
- » circumferential fire protection seal
- » spring-supported telescopic handrail
- » internal spring-supported pivot mechanism
- » studded treads with a size of 36 cm (≈14.2 inches) width x 12 cm (≈4.7 inches) depth
- » high-quality powder-coated surface
- » Infinitely variable adjustment to the room height
- » recessed rotary hinges

Extras

- » blower door set for airtight seal
- » galvanized steel version possible
- » top cover (with or without insulation)
- » custom-made hatch panels
- » three-sided protective railing
- » switches (e.g. for light)
- » electric drive (also with remote control possible)

The galvanized staircase is also available with a powder-coated underside

All Wipro stair models are also available in a galvanized version.

Special dimensions (see illustration) possible on request.



studded treads for higher safety
galvanized, large steps 36 cm width x
12 cm depth

thermal insulation
in bottom cover

white coating of bottom
cover and frame is possible



Eurostep

Eurostep SMART

powder-coated

30 minutes fire-retardant

El₂30 tested according to ÖNORM 3860, EN 1634-1, EN1363-1

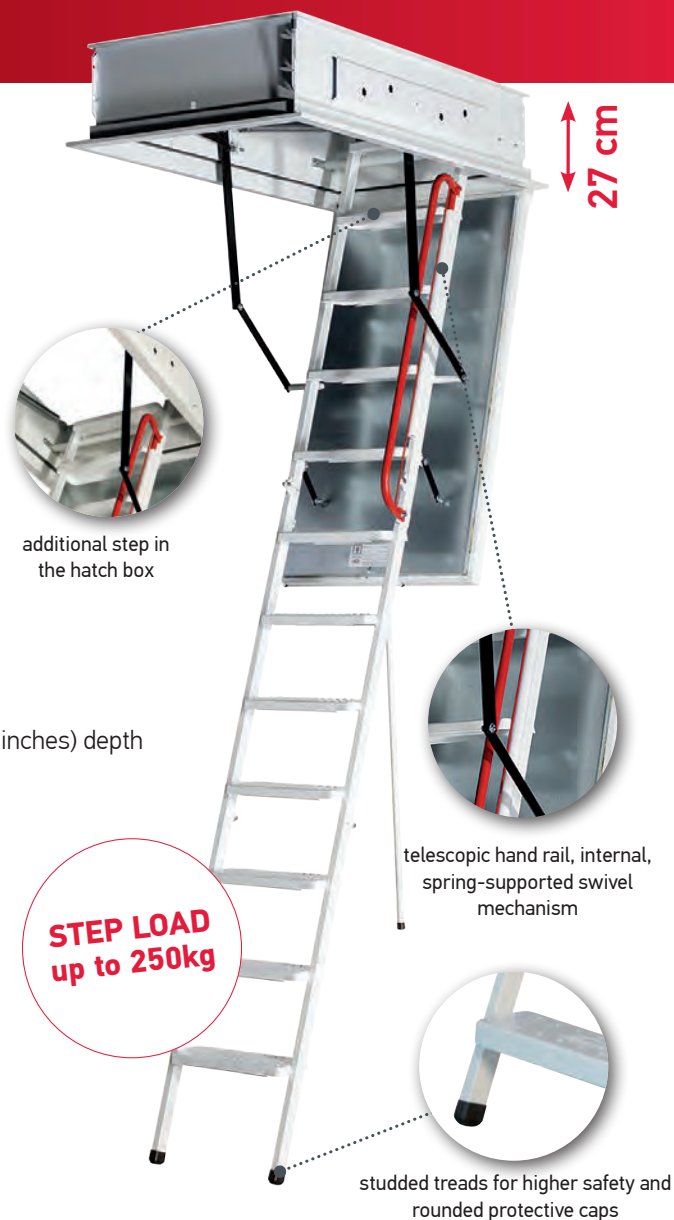
Heat transfer coefficient in the lower cover: $U = 0,7 \text{ W/m}^2\text{K}$

(calculated)

- » 39 cm (~15.4 in) hatch panel, also higher possible
- » 6 cm (~2.4 in) multi-layered stone wool insulation in the bottom cover
- » circumferential fire protection seal
- » spring-supported telescopic handrail
- » internal spring-supported swivel mechanism
- » studded treads with a size of 36 cm (≈14.2 inches) width x 12 cm (≈4.7 inches) depth
- » high-quality powder-coated surface
- » Infinitely variable adjustment to the room height
- » recessed rotary hinges

Extras

- » blower door set for airtight seal
- » galvanized steel version possible
- » custom-made hatch panels
- » three-sided protective railing
- » switches (e.g. for light)



wipro air-tight set



Recommended for optimal installation and best sealing
(more information on page 19).



Eurostep smart

CLEANING AND SERVICING SIMPLY MADE

AZR Elevator maintenance room entrance

Type AZR is a tried and tested construction and serves as a step into the elevator machine room. This makes cleaning and service work particularly easy.

Heat transfer coefficient in the lower cover: $U = 0,7 \text{ W/m}^2\text{K}$
(calculated)

- » 39 cm (~15.4 in) hatch panel, fully-mitred frame as hatch panel possible
- » 6 cm (~2.4 in) multi-layered stone wool insulation in the bottom cover
- » circumferential fire protection seal
- » spring-supported telescopic handrail
- » ball-bearing spring-supported wear-free closing mechanism
- » extrawide studded treads with a size of 56 cm (~22 inches) width x 12 cm (~4.7 inches) depth
- » high-quality powder-coated surface
- » infinitely variable adjustment to the room height
- » recessed rotary hinges
- » also available in the Model Isotec variation with 10 cm thermal insulation

Extras

- » blower door set for airtight seal
- » galvanized steel version possible
- » top cover (with or without insulation)
- » custom-made hatch panels
- » three-sided protective railing
- » switches (e.g. for light)

**STEP LOAD
up to 250kg**



Maintenance flaps

Maintenance doors

The clean solution for wall and ceiling installation. Made to individual design requirements.



Special maintenance flap
without the staircase package



Maintenance door
for the ceiling installation, without
stairs



Maintenance flap
for the ceiling installation,
without stairs



TECHNICALLY REFINED SPACE-SAVING LADDER

Isotec Space

Heat transfer coefficient in the lower cover: $U = 0,33 \text{ W/m}^2\text{K}$

calculated by TU Graz Nr. B12.137.001.484

Heat transfer coefficient with heat insulated top cover: $U = 0,21 \text{ W/m}^2\text{K}$

calculated by TU Graz Nr. B12.137.001.484

Air tightness class 4

tested according to DIN EN 12114 by the IFT Rosenheim to test report No. 12-001746-PR04

- » 52 cm (~20.4 in) thermally separated hatch panel, also higher possible
- » hatch opening size (length x width): 75 - 110 cm x 70 - 90 cm
- » 10 cm multi-layered stone wool insulation in the bottom cover
- » 2 high-quality sealing layers
- » internal spring-supported swivel mechanism
- » studded treads with a size of 36 cm (≈14.2 inches) width x 12 cm (≈4.7 inches)
- » high-quality powder-coated surface
- » Infinitely variable adjustment to the room height
- » recessed rotary hinges

Extras

- » blower door set for airtight seal
- » galvanized steel version possible
- » top cover (with or without insulation)
- » custom-made hatch panels
- » three-sided protective railing
- » switches (e.g. for light)

**STEP LOAD
up to 250kg**



wipro air-tight set



recommended for optimal installation and best sealing
(more information on page 19)

**Isotec Space
+
Wipro
top cover
(optional)**



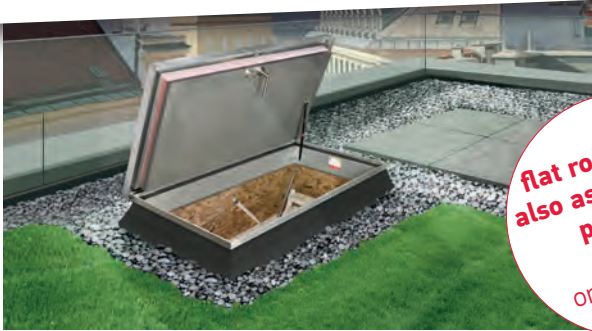
Prof Nr. 12-001746-PR03



Isotec Space

REACH NEW HEIGHTS WITH US

flat-roof exit FDA



flat roof hatch
also as electrical
possible
-
order upfront

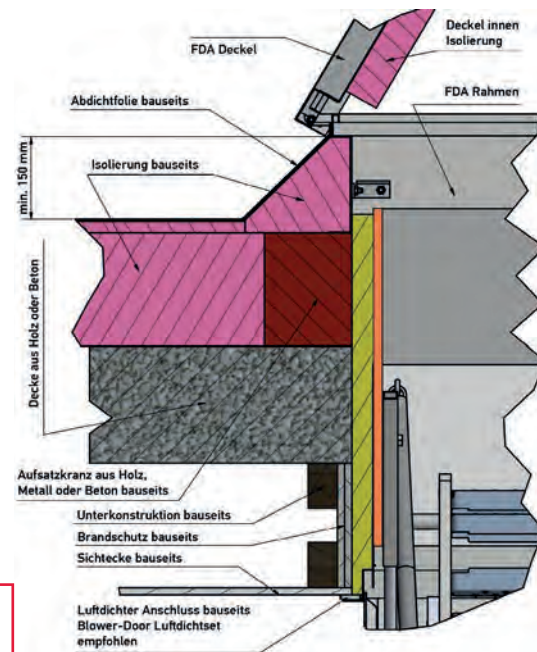


more
Information on
page 25

suitable for every flat roof

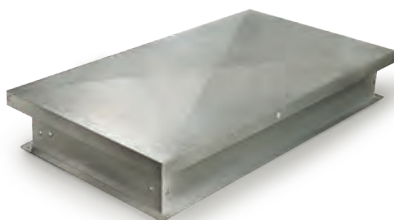
Maintenance work on flat roofs, solar systems, etc. can be done in a flash with Wipro flat roof exits. These are available in combination with different attic ladder models. The heat transfer coefficient depends on the thermal insulation properties of the chosen ladder type:

Isotec 200:	Thermal insulation in the bottom cover 20 cm (more information on page 7)
Klimatec 160:	Thermal insulation in the bottom cover 16 cm (more information on page 10)
Isotec & Isotec Luxe:	Thermal insulation in the bottom cover 10 cm (more information on page 8)
Eurostep:	Thermal insulation in the bottom cover 6 cm (more information on page 12)



The ready-to-install and mount Wipro flat roof accesses provide comfortable access to the roof and offer many other decisive advantages in addition to a high level of safety:

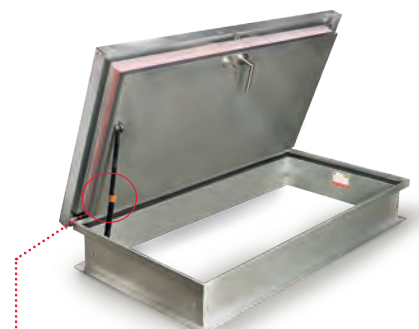
- » Ideal thermal protection through strong thermal insulation in the bottom cover and galvanized top cover
- » Multiple separated hatch boxes according to the room situation
- » Can be installed in ceiling cladding and special sizes are possible
- » High-quality, continuous special seal
- » Available in stainless steel as an option
- » Low space requirement
- » Includes pulling rod and mounting accessories
- » Can also be electric



flat-roof exit closed



flat-roof exit top cover with pneumatic spring



pneumatic spring engages in the open position

Info: Connection and sealing work, as well as aligning the flange to the correct height, must be done by the construction team.



flat-roof exit FDA

12cm thick thermal insulation in the galvanized top cover

Thermal insulation in the top cover

Maintenance work on flat roofs, solar systems, etc. can be done in a flash

Cover closes airtight and can be optionally locked with a cylinder lock

6 to 20 cm thermal insulation in the bottom cover

If used as a part of the Wipro airtight set and is properly installed, the flat roof exit meets the Blower Door guidelines.

Easy handling through pneumatic spring that can engage and support the flat-roof exit top cover.

high-quality galvanized

INFINITE ADJUSTMENT
to room height up to 320 cm

...many customizations possible

Wipro air-tight set

recommended for optimal installation and best sealing
(more information on page 19.)



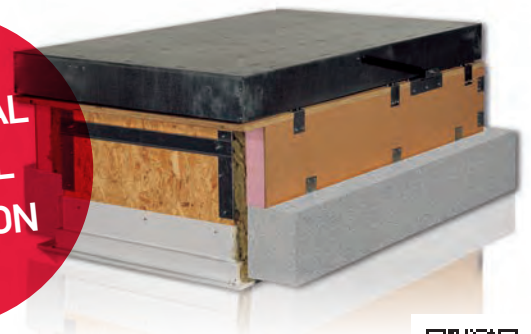
Heat protection covers

Custom made for retrofitting.

Wipro heat protection covers are the heat-insulating extensions for the non-insulated roof-top staircases and can be manufactured for every stair dimension and model. The assembly is carried out directly on the concrete or wooden ceiling.

- **MANUALLY** openable to the back
- **Optional side opening possible**
- High-quality, encapsulating sealing for additional thermal insulation
- Wooden material frame is screwed on all-round linings
- Sealing frame is screwed on the stairway frames
- Two pneumatic springs as opening aid
- Adaptable support board
- Incl. assembly accessories

IDEAL FOR RENOVATION WORKS
also for the installation of different types of
attic staircases



**Insulated top cover
side opening**

**Lateral opening top cover
available depending on the
spatial requirements.**

Top cover

Thermal insulation and protection – can be retrofitted at any time.

- **AUTOMATICALLY** openable to the back **OR MANUALLY** to the side
- Prevents dusting of the stair parts on the roof
- Increases the insulation value of the attic staircase
- Suitable for **all** Wipro models – also without thermal insulation available



Wipro Top cover **WITHOUT** thermal insulation



Wipro top cover for Isotec/Eurostep: **6 cm (≈2.4 inches) thick thermal insulation**

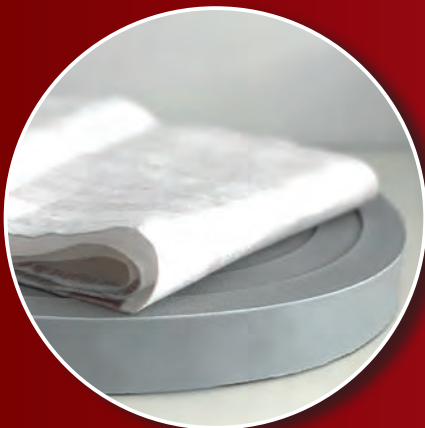


Wipro® air-tight set

The professional airtight finish.

CONTENTS

- » Self-adhesive fleece
- » Self-adhesive sealing tape



electric drive

Comfort at the touch of a button or via remote control.

Wipro attic staircases can be entirely opened or closed with the help of the electric drive – this is convenient and helps to save maximum energy through the best possible heat protection. Thanks to innovative technology from Wipro, comfort and environmental awareness can be easily combined.



**NOT
RETROFITABLE
order additionally
now**

**Flat-roof exit also
available with an
electric drive
order upfront (not
refittable)**

Available for the Eurostep attic staircase model as well as the Isotec model



Remote control also available



accessories

safety railing



Increased safety through railing over the attic ladder.

wide steps



36 cm wide treads for a hatch size of 60 cm or more.

additional steps

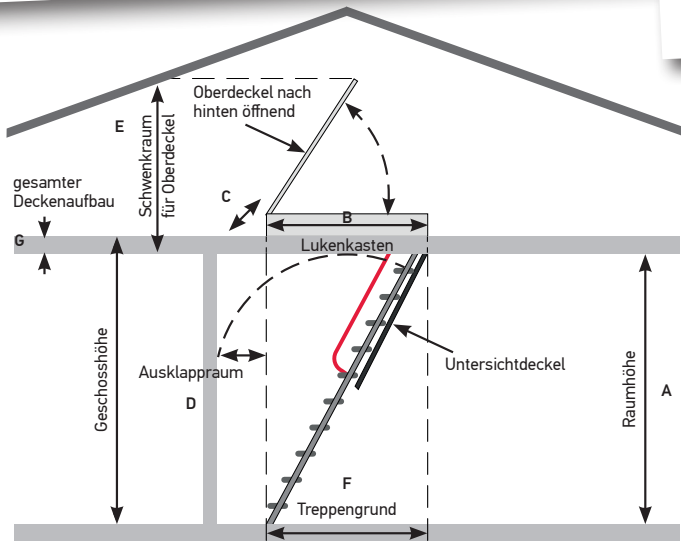


Additional treads for higher hatches

Wipro attic staircases

technical data

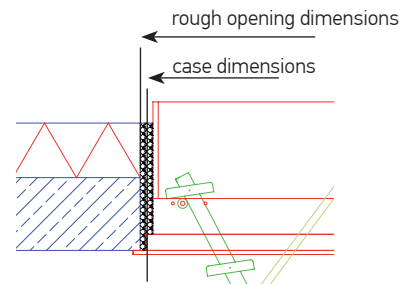
Custom sizes available for any type!



my measures

custom sizes available for any type!

- A room height
- B rough opening length
- C rough opening width
- D swivel room
- E top cover opening space
- F staircase base
- G ceiling thickness



All measurements in centimetres

TYP	Rohbaulichte (BxC)	Kastengröße	Raumhöhe (A)	Ausklappraum (D)						Treppenunterteilungen	
				RH 250	RH 255	RH 260	RH 265	RH 270	RH 275		RH 280
Eurostep SMART	140x70 cm	136,7 x 66,4 cm	250 – 270 cm	-	-	-	-	-	-	-	3
	130x70 cm	126,7 x 66,4 cm	250 – 270 cm	-	-	-	-	-	-	-	
	120x70 cm	116,7 x 66,4 cm	250 – 270 cm	-	-	-	-	-	-	-	
Eurostep	140x70 cm	136,7 x 66,4 cm	255 – 275 cm	x	38	35	32	27	23	x	3
	130x70 cm	126,7 x 66,4 cm	255 – 275 cm	x	48	45	42	37	33	x	
	120x70 cm	116,7 x 66,4 cm	250 – 265 cm	45	41	36	31	x	x	x	
	120x60 cm	116,7 x 58,1 cm	250 – 265 cm	45	41	36	31	x	x	x	
	110x70 cm	106,7 x 66,4 cm	255 – 265 cm	x	38	34	30	x	x	x	
Isotec	140x70 cm	136,7 x 66,4 cm	255 – 275 cm	x	38	35	31	27	22	x	3
	130x70 cm	126,7 x 66,4 cm	255 – 275 cm	x	48	45	41	37	32	x	
	120x70 cm	119,0 x 66,4 cm	250 – 265 cm	44	40	35	29	x	x	x	
	120x60 cm	119,0 x 58,1 cm	250 – 265 cm	44	40	35	29	x	x	x	
	110x70 cm	106,7 x 66,4 cm	255 – 265 cm	x	38	34	29	x	x	x	
Isotec Luxe	140x70 cm	136,7 x 66,4 cm	255 – 275 cm	x	38	34	31	27	22	x	3
	130x70 cm	126,7 x 66,4 cm	255 – 275 cm	x	48	44	41	37	32	x	
	120x70 cm	119,0 x 66,4 cm	250 – 265 cm	43	39	35	29	x	x	x	
	120x60 cm	119,0 x 58,1 cm	250 – 265 cm	43	39	35	29	x	x	x	
	110x70 cm	106,7 x 66,4 cm	255 – 265 cm	x	37	33	29	x	x	x	
Isotec 200	140x70 cm	136,7 x 66,7 cm	250 – 270 cm	35	31	27	22	16	x	x	3
	130x70 cm	126,7 x 66,7 cm	250 – 265 cm	23	19	15	9	x	x	x	
	120x70 cm	118,3 x 66,7 cm	250 – 265 cm	33	29	25	19	x	x	x	
	120x60 cm	118,3 x 58,1 cm	250 – 265 cm	33	29	25	19	x	x	x	
Isotec SMART	140x70 cm	136,7 x 66,4 cm	255 – 280 cm	x	39	35	31	27	22	16	3
	130x70 cm	126,7 x 66,4 cm	255 – 275 cm	x	26	23	19	15	9	x	
	120x70 cm	119,0 x 66,4 cm	255 – 275 cm	x	36	33	29	25	19	x	
	120x60 cm	119,0 x 58,1 cm	255 – 275 cm	x	36	33	29	25	19	x	
	110x70 cm	106,7 x 66,4 cm	255 – 265 cm	x	38	34	29	x	x	x	
Klimatec 160/ Klimatec 160 SMART	140x70 cm	136,7 x 66,4 cm	250 – 275 cm	38	34	30	26	21	15	x	3
	130x70 cm	126,7 x 66,4 cm	250 – 265 cm	26	22	18	14	9	x	x	
	120x70 cm	119,1 x 66,4 cm	250 – 265 cm	36	32	28	24	19	x	x	
	120x60 cm	119,0 x 58,1 cm	250 – 265 cm	36	32	28	24	19	x	x	

Top cover set for retrofitting

Rohbaulichtmaße *	Eurostep	Isotec /Isotec Luxe/Isotec 200	Klimatec
140 x 70 cm	ADH-E, HOD-E	ADH-I, HOD-I	ADH-I, HOD-I
130 x 70 cm	ADH-E, HOD-E	ADH-I, HOD-I	ADH-I, HOD-I
120 x 70 cm	ADH-E, HOD-E	ADH-I, HOD-I	ADH-I, HOD-I
110 x 70 cm	ADH-E, HOD-E	ADH-I, HOD-I	ADH-I, HOD-I
120 x 60 cm	ADH-E, HOD-E	ADH-I, HOD-I	ADH-I, HOD-I

multi-purpose cabinets

powder-coated

As an office cabinet, for workshops or in the garage – Wipro multi-purpose cabinets make a great impression.

The simple, but extremely precise execution and the flexible interior make practically any application possible for the storage space wonder. Whether folders, office items or cleaning material – order is easily achieved with the suitable shelves. For liquid containing uses in workshops and garages – there are also liquid-tight inserts in the form of a vat, which are also suitable for the storage of cleaning agents, chemicals, oil etc.

- **Size 95 x 40 x 195 cm (≈ 37.4 x 15.7 x 76.8 inches)** (Width x depth x height)
- Compartments every 5 cm (≈ 2 inches) possible, height adjustable
- Lockable with two keys
- Internal hinges
- White powder coating
- All-metal construction
- Recessed doors
- Incl. 4 compartments



comes

welded & assembled

example



multi purpose cabinets

galvanized

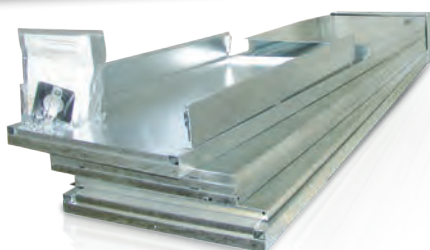
- Compartments every 5 cm (≈2 inches) possible, height adjustable
- Lockable with two keys
- Internal hinges
- All-metal construction
- Recessed doors
- Incl. 4 compartments

W/D/H
95 x 43,5 x 195 cm
(≈37.4 x 17.1 x 76.8
inches)



comes

disassembled & packed for transport



FIRST-CLASS
craftmanship
made in
austria

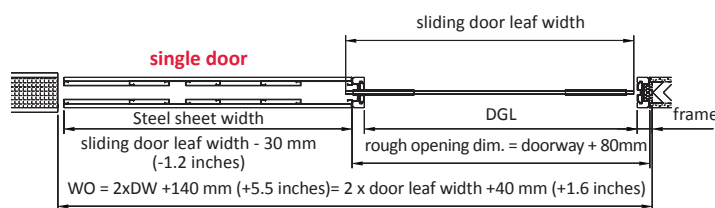
pocket door systems

single or double

made-to-order in highest quality.

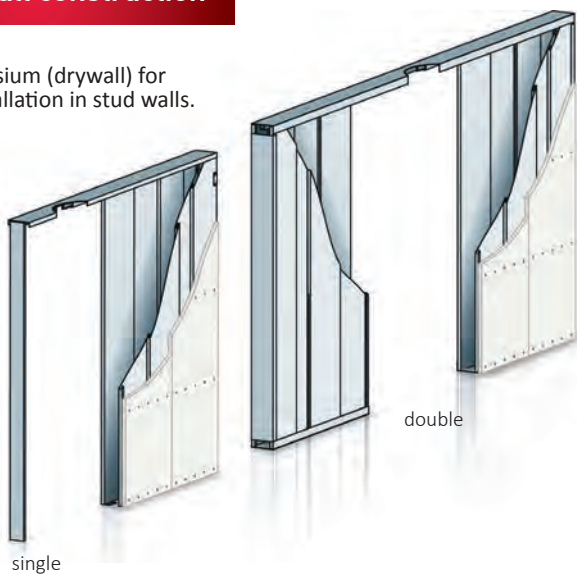
Wipro Sliding pocket door systems made of galvanized steel sheet can be custom-made for EVERY wall opening and ALL wall thicknesses from 10 - 15 cm (≈4 - 5.9 inches).

The high-quality, maintenance-free aluminum light rail for sliding doors has stoppers and rollers. It is enclosed with the sliding door system and is built-in.



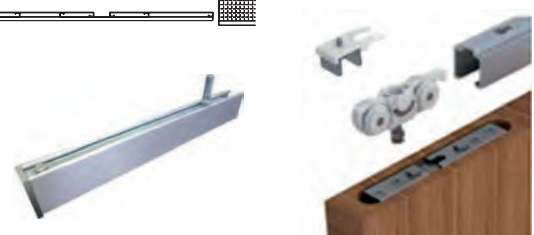
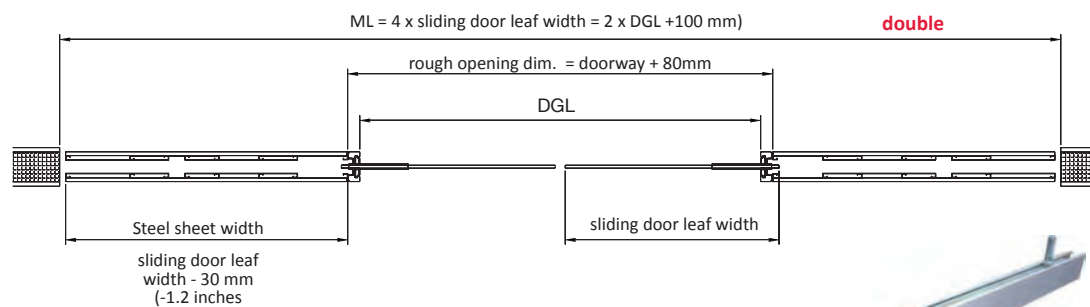
for drywall construction

Gypsum (drywall) for installation in stud walls.



for plaster construction

Plaster for installation in masonry (for subsequent plastering)





Wipro showrooms



Wipro Werksschauraum Vorderweißenbach



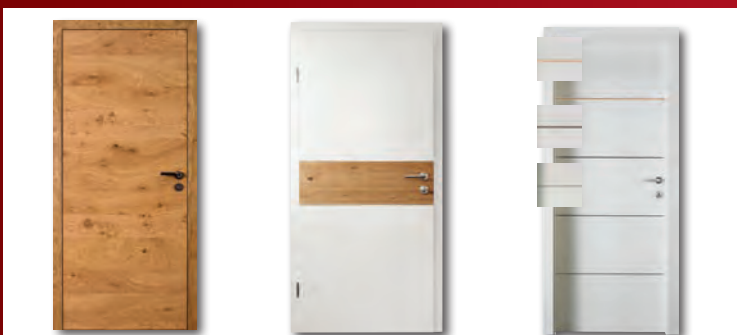
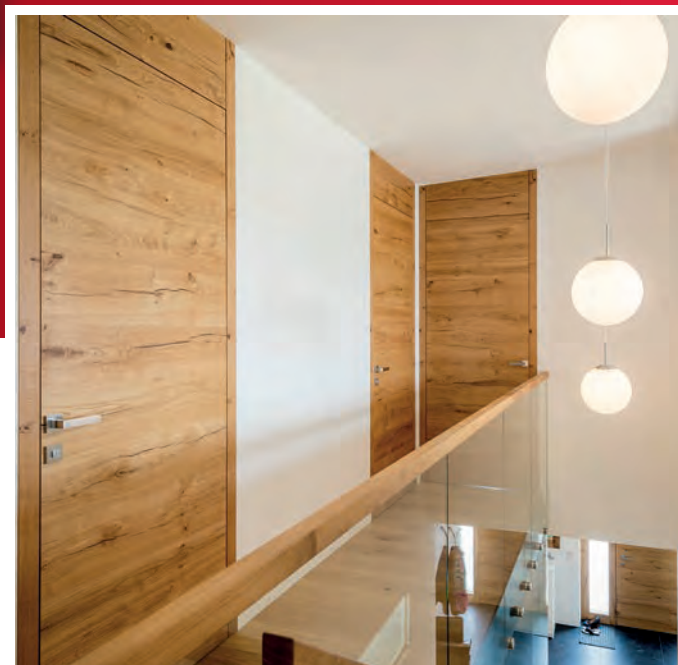
Wipro showroom Vienna



Wipro showroom Munich

Wipro interior doors

High-quality material combinations and styles – from modern to classic to the new Alpin edition. The color and shape of interior doors have a decisive influence on the harmonious indoor feeling.



Sliding & space-saving doors

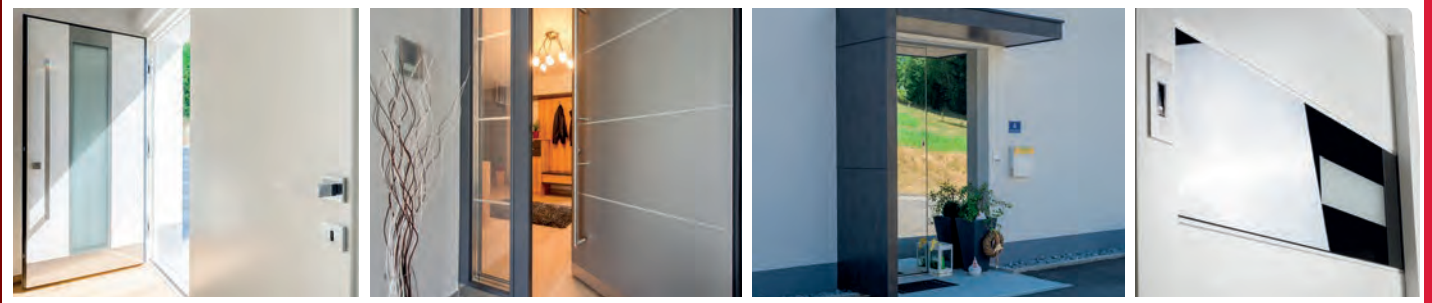
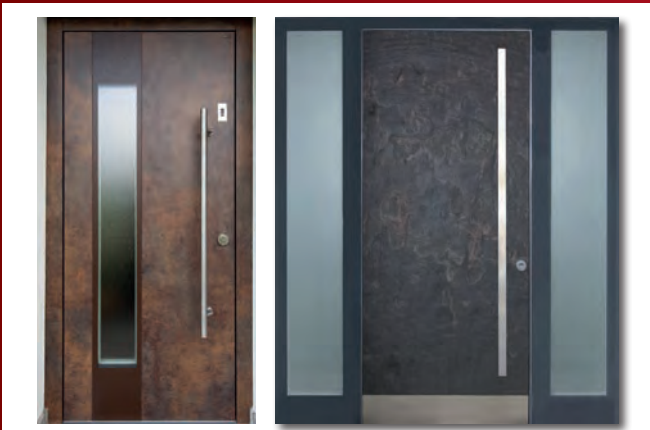
Wipro sliding doors are available both in front of the wall as well as inside of it – in solid wood, glass or all-glass versions.

Space-saving, turning and swinging doors require only about 40% of the swivel space of a conventional door.



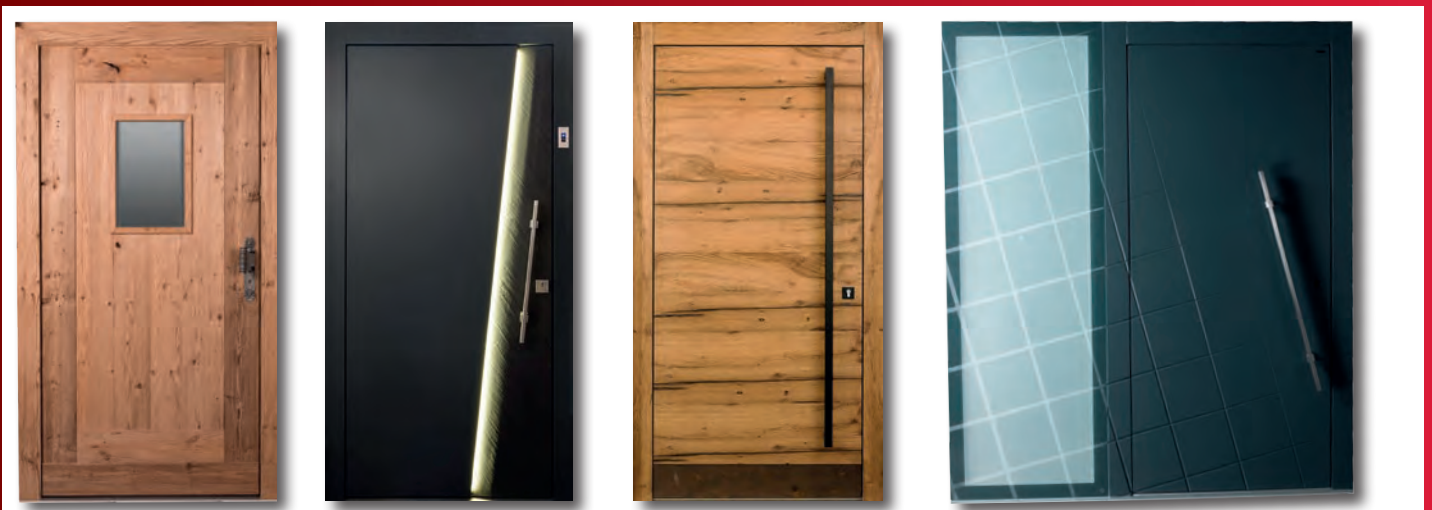
constructions

Wipro front doors



Wipro front doors are manufactured according to the latest technical standards. High-quality surface coating on the exterior can be adapted to the façade whilst having the interior oriented on the room design.

Discreet milling, INOX applications, noble glazing, individual design elements or complete panels with optically pleasing materials such as natural stone, steel, ceramic or concrete are possible.





Wipro door and staircase factory in Vorderweißenbach

**Wipro GmbH
Werksschauraum Vorderweißenbach**

Gewerbestraße 2
4191 Vorderweißenbach
ÖSTERREICH

Tel.: +43 (0)7219/7004 - 0
Fax: +43 (0)7219/7004 - 76
E-Mail: info@wipro.at



**Wipro GmbH
Ausstellungszentrum Kirchheim bei München**

Benzstraße 5a
85551 Kirchheim b. München (Gewerbegebiet)
DEUTSCHLAND

Tel.: +49 (0)89/90 41 01-161
Fax: +49 (0)89/90 41 01-162
E-Mail: info@wipro.de



**Wipro GmbH
Ausstellungszentrum Wien**

Sagedergasse 8
1120 Wien
ÖSTERREICH

Tel.: +43 (0)1 804 8775 11
Fax: +43 (0)1 804 8775 10
E-Mail: wien@wipro.at



Check our opening hours on our website!



**Looking for a Wipro dealer near you?
No problem!**

If you haven't found one yet, we will find you a personal advisor and specialist dealer for Wipro quality products.



Simply scan this QR code, fill out the digital form and send the request.

your Wipro dealer